

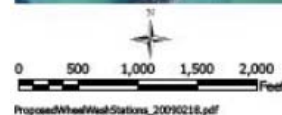
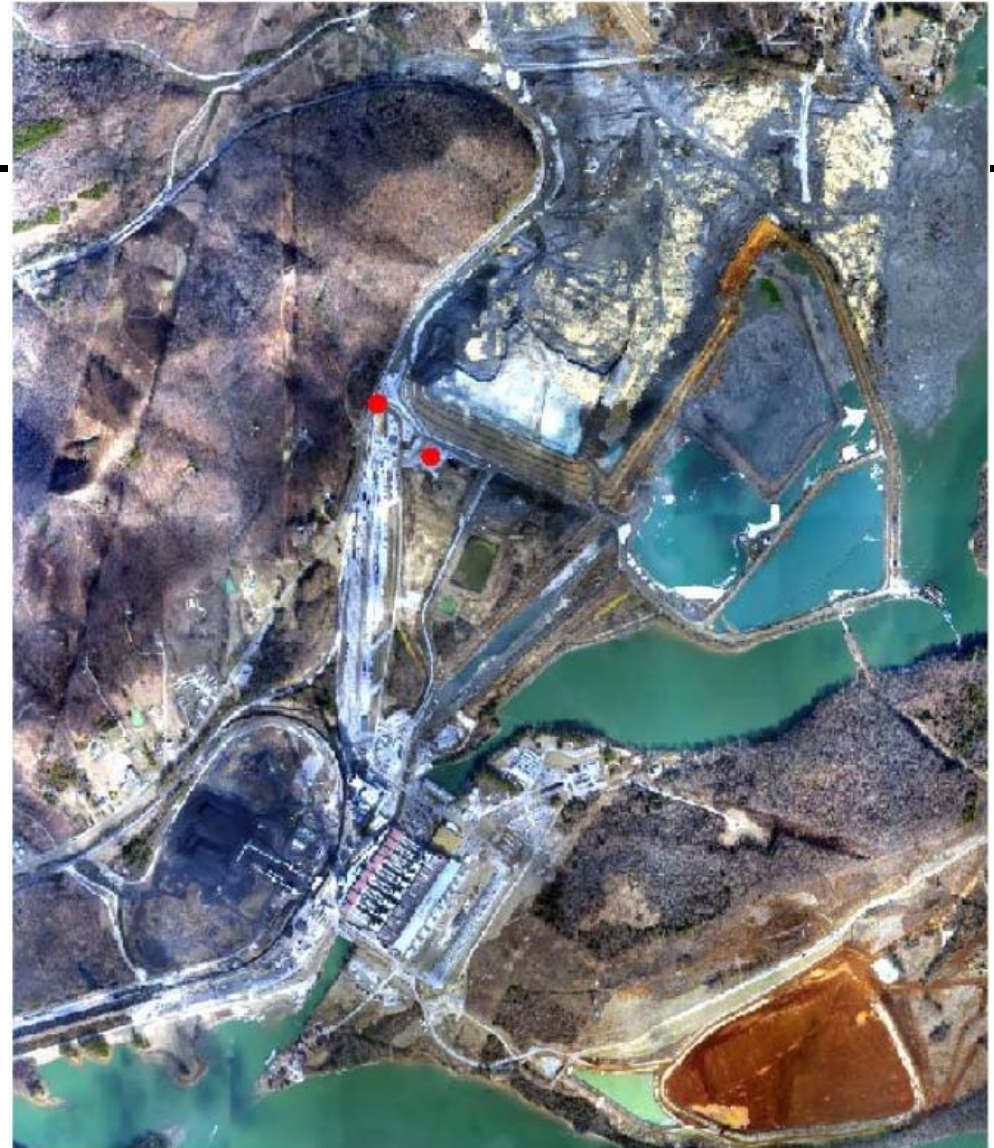






Proposed Wheel Wash Stations

- Three Wheel Wash Stations To Prevent “Track Out” On Public Roads Are Being Installed
- The Two Red Dots Illustrate Installed Stations
- The Third Station Will Be In An Area That Is Still Being Excavated And Cannot Be Installed Until The Area Is Ready
- TDEC-APC Will Do An On-Site Review Of These Stations And Their Locations To Determine The Adequacy Of Their Operations.



● Proposed Wheel Wash Stations
* Third Location TBD

Date of Photography: 02/06/2009

Tennessee Valley Authority
O&B - ER&S
Geographic Information & Engineering



WHEEL WASH INSTALLATION





Department of Environment & Conservation

Jim Fyke, Commissioner

 Search

- For Residents
- For Visitors
- For Business
- About Us
- Assistance
- Permitting
- Parks & Conservation
- Publications
- Air Quality
- Land Resources
- Water Quality
- Historical Commission
- Newsroom
- Sitemap
- Contact Us

- Related Topics**
- East TN Environmental Conference
 - EE in Tennessee
 - Sustainable Tourism
 - U.S. EPA

Ash Slide at TVA Kingston Fossil Plant

The Department of Environment and Conservation has established a continuous air monitoring station North-Northeast of the coal ash slide site with support and assistance from the U.S. Environmental Protection Agency.

The department's air monitoring setup at this station currently includes a PM10 TEOM (continuous particulate monitor) and a HiVol (high volume TSP sampler) for metals analysis. Preliminary results for the TEOM indicate PM10 (particulate matter 10 microns and smaller in size) are below the PM10 standard of 150 ug/m3.

The department is continually evaluating the monitoring results to determine whether additional monitoring locations, types of monitors and/or monitoring frequency should be utilized.

The department's Division of Air Pollution Control has also implemented procedures to help ensure that the generation of fugitive dust from the spilled ash does not impact air quality as it dries and becomes windborne.

Summary results from the air quality monitoring station and regular updates on the department's air monitoring coordination efforts at the TVA Kingston Ash Slide site will be posted to this page.

[Air Monitoring for Particulate Matter near TVA Kingston ash slide - Feb. 6, 2009](#)

[Air Monitoring Results Status Report - Feb. 2, 2009](#)

Results

- [Air Monitoring Results](#)
- [Soil and Ash Results](#)
- [Surface Water Results](#)
- [Water Treatment Results](#)

Department Information

- [TDEC Kingston Home](#)
- [Ash Analysis & Historical Reporting](#)
- [Commissioner's Order](#)
- [Community Guidance](#)
- [Enforcement and TVA Submittals](#)
- [Monitoring Plans](#)
- [Results Reporting](#)

Helpful Links

- [Roane County Government](#)
- [TVA Kingston Update](#)
- [TN Department of Health](#)
- [TN Wildlife Resources Agency](#)
- [U.S. EPA Kingston Update](#)
- [U.S. EPA On-site Coordinator Kingston](#)



- [Bredesen's Webpage](#)
- [Health Care for Kids](#)



- Featured Sites**
- [TVA Kingston Update](#)

- Agency Services**
- [Radon Program](#)
 - [Revolving Loan Fund](#)
 - [Solid Waste Assistance](#)

- TN.GOV Services**
- [Renew Driver's License](#)
 - [One Stop Business Registration](#)
- [More](#)



<http://www.state.tn.us/environment/kingston/air.shtml>



North Carolina Lawsuit Against TVA

- NC filed a public nuisance suit against TVA in federal court – Western District of NC
- Claimed emissions from all TVA plants in TN, AL & KY were harming the state and its citizens
- Judge ruled that only three East TN plants – Kingston, Bull Run & John Sevier plus Widows Creek in Northeastern AL impacted NC.



North Carolina Lawsuit Against TVA

- For TN plants, judge ruled that Kingston and Bull Run should finalize their control equipment construction already underway
- For John Sevier, judge ruled that the schedule should be significantly accelerated to December 31, 2011
 - SO₂ by ~1 year earlier than planned
 - NO_x by ~3 years earlier than planned



North Carolina Lawsuit Against TVA

- TVA asked the judge to reconsider the schedule at John Sevier
- NC opposes the reconsideration
- Judge instructed the parties to appear before him on March 20, 2009
- Stay Tuned...



What Can We As Individuals Do To Help Improve Air Quality?

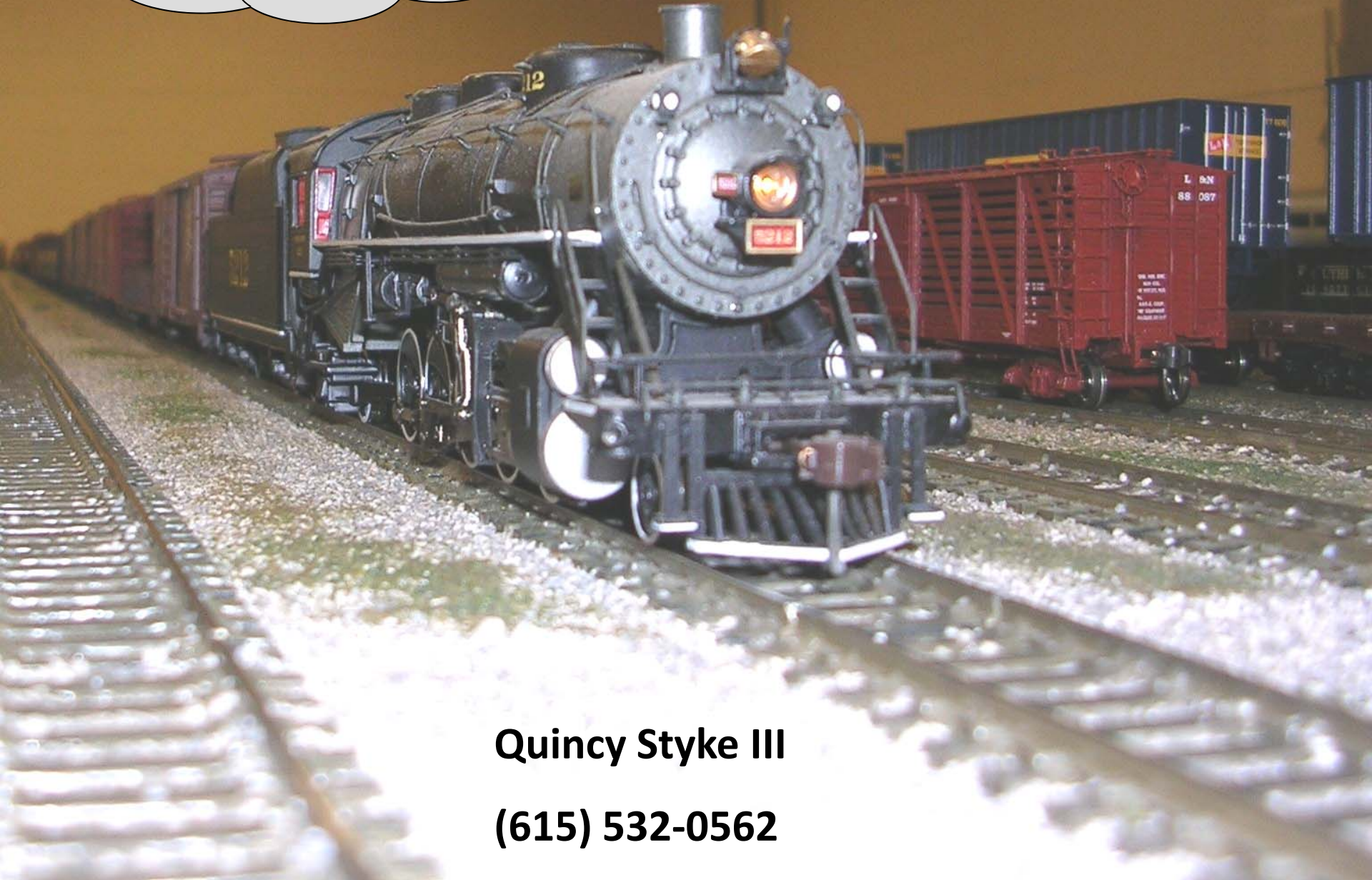
- Use Less Fossil Fuel Derived Energy
 - Less Electricity – “Tune Up” Your Home, Deciduous Trees & Reflective Roofing, Solar & Geothermal Energy Technology
 - Less VMT & Fuel Efficient Vehicles
- Practice Air Quality Action Day Drills:
 - Car or Van Pool
 - Mass Transit
 - Defer Nonroad Engine Use
 - Drive the “Pride of the Fleet” – Refuel in the Evening
- Spread The Word

TVA Tennessee - 2007 Plant Emission Control and Emission Rate Summary

Plant	SO ₂			NO _x				
	CY2007 Rate #/mmBtu	CY2007 Tons	Control Method(s)	CY2007 Annual Rate #/mmBtu	CY2007 Annual Tons	CY2007 O ₃ Season Rate #/mmBtu	CY2007 O ₃ Season Tons	Control Method(s)
Allen	0.49 #/mmBtu	13,200	Low S Coal	0.47 #/mmBtu	12,600	0.07 #/mmBtu	863	OFA & SCR
New Johnsonville	1.43 #/mmBtu	65,000	Low S Coal	0.40 #/mmBtu	18,200	0.36 #/mmBtu	7,311	LNB Units 7-10 SNCR Unit 1 HERT/OFA Unit 4
Cumberland	0.20 #/mmBtu	17,100	FGD	0.38 #/mmBtu	32,800	0.08 #/mmBtu	2,991	LNB & SCR
Gallatin	0.60 #/mmBtu	23,100	Low S Coal	0.16 #/mmBtu	6,100	0.15 #/mmBtu	2,461	LNB & OFA
Kingston	0.96 #/mmBtu	51,100	Low S Coal FGD Unit 6-9 Jan.'10 FGD Unit 1-5 June'10	0.24 #/mmBtu	12,500	0.05 #/mmBtu	1,196	LNB & OFA Units 5-8 Comb. Control Unit 9 SCR All Units
Bull Run	1.21 #/mmBtu	40,000	Low S Coal FGD Jan.'09	0.36 #/mmBtu	11,900	0.07 #/mmBtu	1,008	SCR Only
John Sevier	1.16 #/mmBtu	27,700	Low S Coal FGD 1 st 2 Units Jan. '12 FGS 2 nd 2 Units June '12	0.36 #/mmBtu	8,600	0.34 #/mmBtu	3,442	LNB & OFA all Units HERT Unit 1 HERT Units 2-4 in 2009 SCR 1 st 2Units June '14 SCR 2 nd 2 Units Jan. '15

- SCRs operate 5 months out of the year under the NO_x SIP Call - Kingston & Bull Run operate in April too for Class I & NA Area reasons
- SCRs will begin operating 12 months out of the year at all units with SCR beginning January 1, 2009
- All FGDs are designed to be 95% + efficient in SO₂ removal.
- Unless otherwise indicated, control technique applies to all units at the plant

Questions?



Quincy Styke III

(615) 532-0562