

**Emergency Preparedness  
and  
Environmental Epidemiology  
Collaborations  
in Northeast Tennessee**

**La'Shan D. Taylor MS, MPH  
Northeast TN Regional Health Office  
Johnson City, TN**



# Overview

---

**Emergency Preparedness and Public Health**

**Environmental Health/ Epidemiology**

**Partnerships and Collaborations**

**Community Resource Assessment**

**Assessment Preliminary Results**

# **The Events of Fall 2001 Changed/ Challenged Us All**

---

**Our Sense of Invulnerability**

**Our Self-Confidence**

**Our Awareness of Public Infrastructure,  
and**

**Our Definitions of First Responders**

**In addition, we have changed how we do business and  
who we do business with**

# Public Expectations (Disaster or Not)

Safe Food/Water



Shelter



Health/Medical  
Care (including  
mental health)



Safety

# Will The First Response To A Bioterrorist Attack be this.....



**.... or this?**



# It's More Likely To Look Like This....



**...or this.**

**Water Sampling**



**Environmental Surveillance**



**Air Sampling**



# **Priorities for Public Health Preparedness: CDC & State/Local Health Departments**

---

**Emergency Preparedness and Response**

**Enhance Surveillance and Epidemiology**

**Enhance Laboratory Capacity**

**Enhance Information Technology**

**Enhance National Pharmaceutical Stockpile**

# **Emergency Public Health**

---

**NOT a new public health activity**

**IS a new public health priority**

**Different culture**

**Different way of doing business**

**National security and law enforcement involvement**

**Involves Public Health being seen as a “ First Responder”  
Type Agency**

**Environmental health is a key component**

# **Environmental Epidemiology**

## **Focus**

---

**The study of the distribution of human health and disease in relationship to exposure to agents in the general and occupational environment**

**Overall, I find, collect, and analyze meaningful environmental health data and identify populations at disproportionate risk of environmental exposure and adverse health outcomes**

# **Environmental Health/ Epidemiology**

---

## **Traditional activities:**

**Water quality**

**Sewage management**

**Food safety**

## **New Responsibilities:**

**Air and noise pollution**

**Chemical  
contamination of  
drinking water**

**Solid and hazardous  
waste**

**Radiation**

**Childhood lead  
poisoning**

**Asthma**

# **Environmental Epidemiology Since 9/11**

---

**Preparing for future emergencies**

**All Hazards**

**Natural**

**Man-Made**

**Assisting with the management of:**

**Hazardous release events**

**Toxic chemical exposures**

**Overall, environmental health risk**

**Trainings, training and more trainings**

# Public Health Partnerships

---

**Medical/ ER Staff/ Veterinarians**

**EMS**

**Public Health Professionals**

**Laboratories**

**Local & State Law Enforcement**

**Other Emergency Preparedness Personnel**

**Emergency Management Agency**

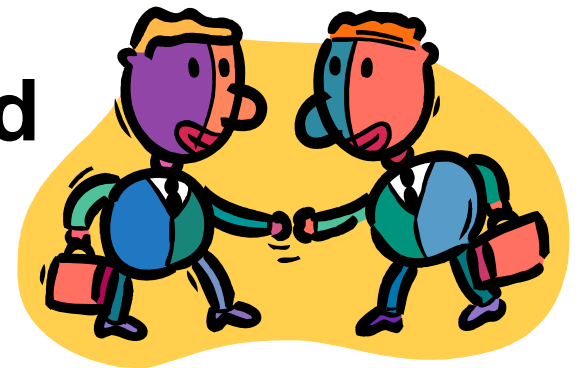
**Fire/ Hazmat Teams**

# **Public Health Preparedness Coordination in Northeast TN**

---

**Training of/with special response teams  
Hazmat, Forensic, WMD sampling**

**Development of coordinated  
communication systems**



**Participation in drills/exercises for  
different scenarios**

**In every county**

# **Coordination in Northeast TN Cont.**

---

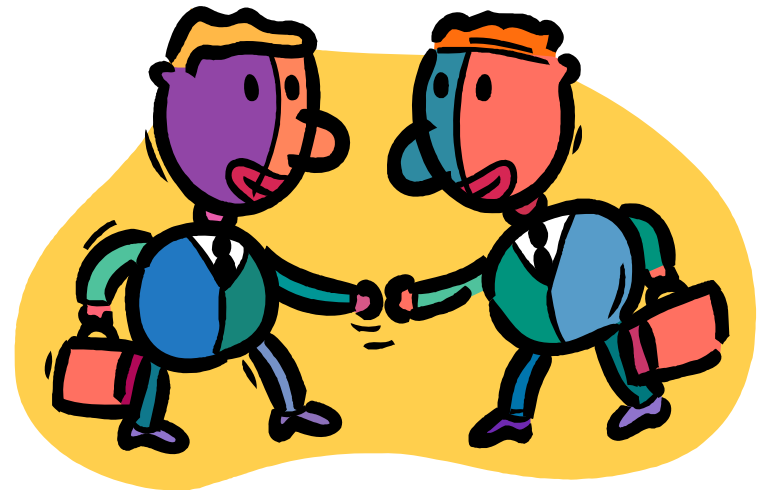
**Development of interagency protocols**

**Collaboration with outside agencies to  
assess community vulnerabilities**

**Emergency Management Agency**

**Fire/ Hazmat**

**LEPC, REPC**





# **Community Resource Assessment**

# Community Resource Assessment

---

In order to protect your town's resources and character, you first have to know what those resources are and what makes up the "character" of your town!

A complete Community Resource Inventory (CRI) is made up of three different resource inventories: natural, human, and economic.

# **What is a Community Resource Assessment?**

---

**Information entered into an access database that can be accessed by first responders**

**Enables emergency response agencies to:**

- Limit casualties**

- Increase community response**

**Enables emergency response agencies to respond quickly by being able to:**

- Locate/ obtain critical equipment**

- Locate/ obtain materials**

- Locate/ obtain vehicles**

- Locate/ contact personnel**

- Acquire experts from local industries, commercial businesses and service organizations**

# **Why The Information Is Needed In One Place?**

---

## **In order to effectively plan**

**We need to know what's out there, what's going on around us, how we can partner with others to prevent casualties**

## **In order to do this we must:**

**Assess what services and tools we have**

**Determine if new services or tools are needed**

**Decide if there is enough of certain services**

**Where we will get anything needed**

# Community Resource Assessment Utility

---

Database allows county Emergency Management Agencies to plan for their county by performing:

**Needs Assessment**

**Tools used to determine what the needs are**

**Resource Inventory**

**Available services in the community**

**Gap Analysis**

**Identifies deficiencies in services within the community**

# Similar Assessments Across the Nation

---

## Federal Emergency Management Agency

State-level assessment of the National Emergency Management Baseline Capability Assessment Program (NEMB-CAP)

NEMB-CAP involves a multi-year effort to assess, analyze, evaluate, and collectively frame state emergency management capabilities against a common national set of criteria

**56 state and state-level emergency management programs must have some type of assessment completed by the end of 2006**

**New York  
Pennsylvania**

# **What an Assessment Does Not Do?**

---

**Commit the agency to donating the items**

**Assume anything- Everything must be verified**

# Database Activities

---

## **Workable Database**

**Personnel and Equipment initially collected**

**Easily Managed/ Manipulated**

**Updated Bi-Annually**

**Verified for Accuracy**

**Local EMAs have determined counties  
vulnerabilities/ Preparedness (natural and manmade)**

**Assisting industries in understanding their potential  
vulnerabilities to a disaster- terrorists event or  
terrorists utilization**

# Preliminary Results

---

**8 TN counties are using the database extensively (people, equipment, gap analysis, etc.)**

**20 TN counties are using the database for tracking people and equipment**

**The other counties are considering implementing database based on TEMA recommendations.**

**Over 10,000 pieces of equipment have been identified and being verified**

**Over 4,000 personnel and people with special skills**

# Results Continued

---

**New hazards are being planned for**

**Several Industries identified and are now being monitored**

**Tier 2 reports and Resource Teams are now being entered and assessed across the region**

**Overall, TEMA is looking to implement across the State with other states looking at our process**

# Lessons Learned

---

**Computer 101 is essential**

**Begin with an open mind of the time required and what is obtainable**

**Bring all partners to the table**

**Let everyone have a say**

**Realize that things can become very BIG, very QUICKLY**

**Any Questions?????**

---

*Thank You for Listening*